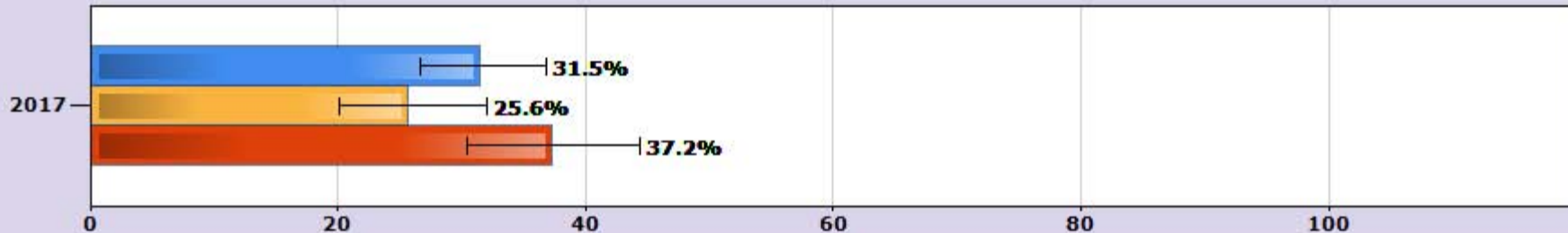


Were in a physical fight

(one or more times during the 12 months before the survey)

Philadelphia, PA, High School Youth Risk Behavior Survey, 2017

■ Total ■ Female ■ Male

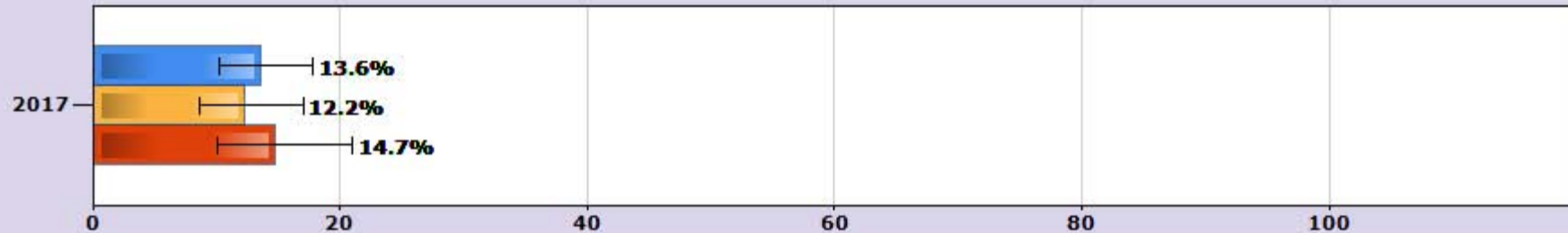


Were in a physical fight on school property

(one or more times during the 12 months before the survey)

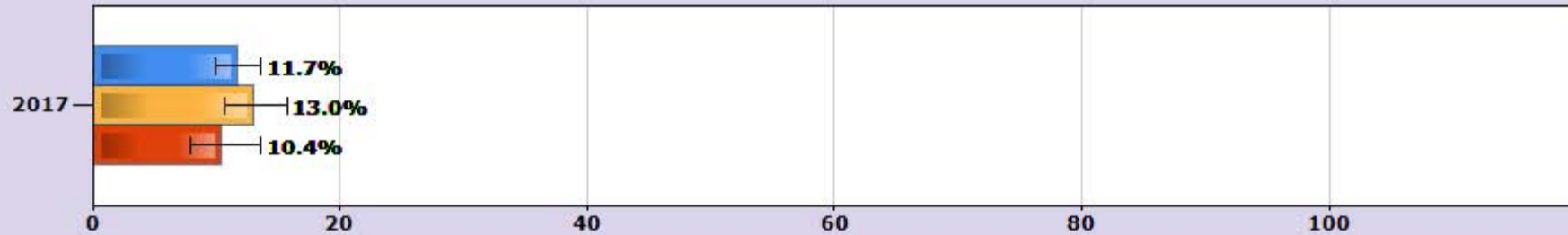
Philadelphia, PA, High School Youth Risk Behavior Survey, 2017

■ Total ■ Female ■ Male



Were bullied on school property
(during the 12 months before the survey)
Philadelphia, PA, High School Youth Risk Behavior Survey, 2017

■ Total ■ Female ■ Male

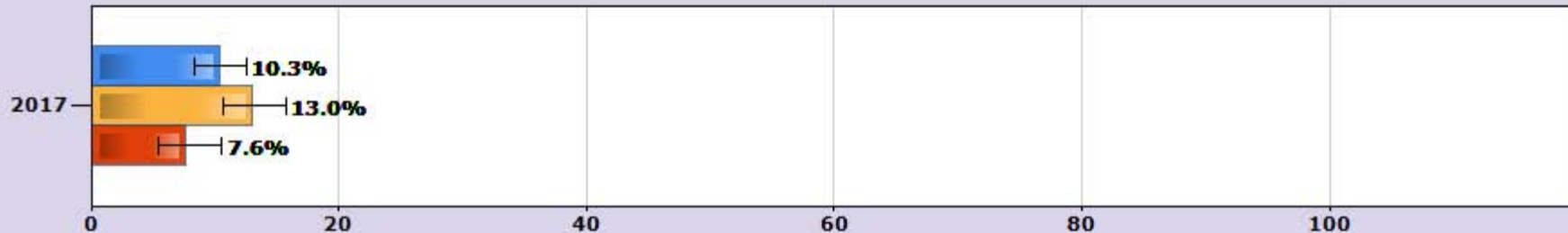


Were electronically bullied

(counting being bullied through texting, Instagram, Facebook, or other social media, during the 12 months before the survey)

Philadelphia, PA, High School Youth Risk Behavior Survey, 2017

■ Total ■ Female ■ Male

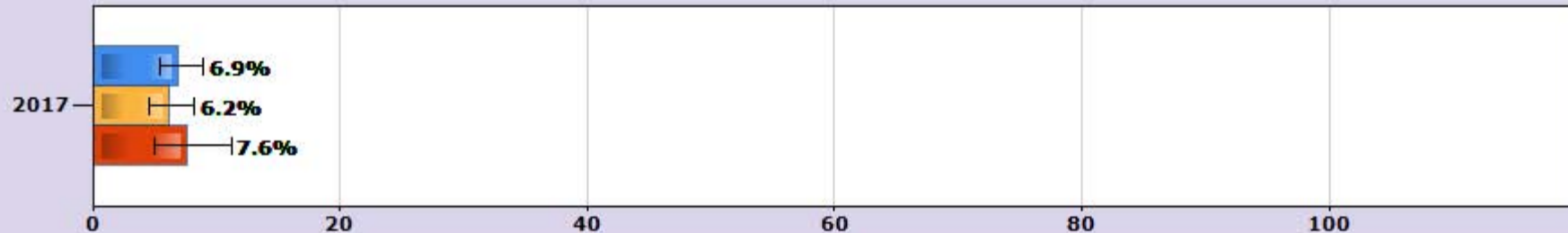


Did not go to school because they felt unsafe at school or on their way to or from school

(on at least 1 day during the 30 days before the survey)

Philadelphia, PA, High School Youth Risk Behavior Survey, 2017

■ Total ■ Female ■ Male

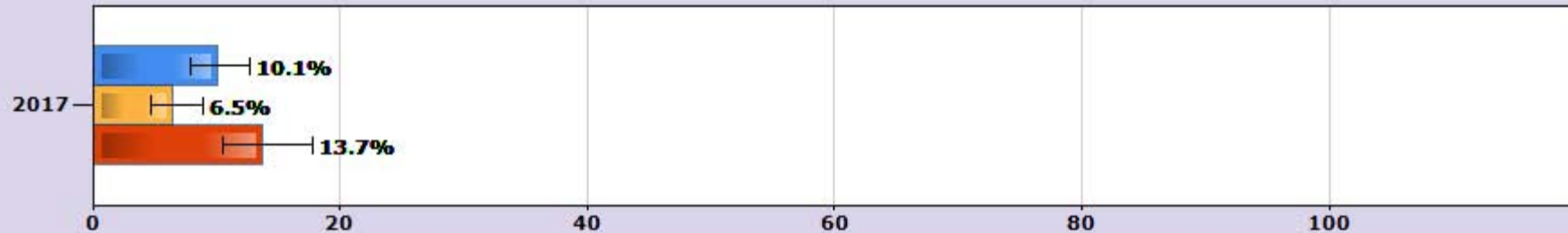


Carried a weapon

(such as a gun, knife, or club, on at least 1 day during the 30 days before the survey)

Philadelphia, PA, High School Youth Risk Behavior Survey, 2017

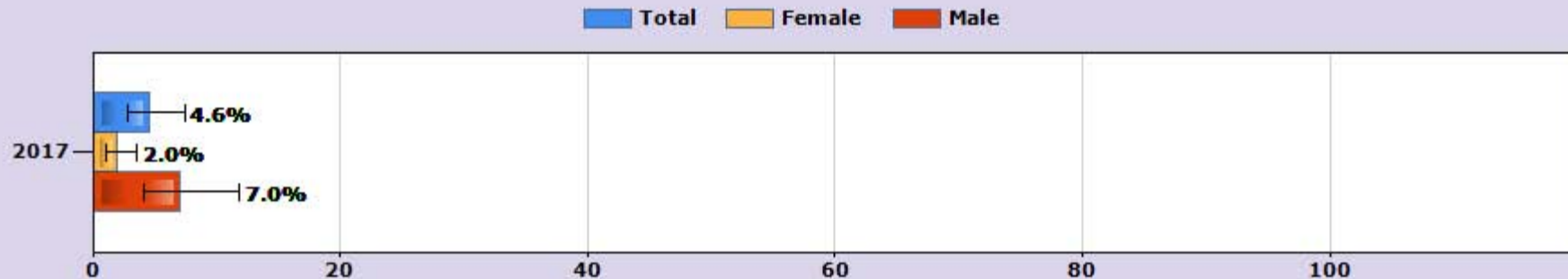
■ Total ■ Female ■ Male



Carried a gun

(on at least 1 day during the 12 months before the survey, not counting the days when they carried a gun only for hunting or for a sport such as target shooting)

Philadelphia, PA, High School Youth Risk Behavior Survey, 2017

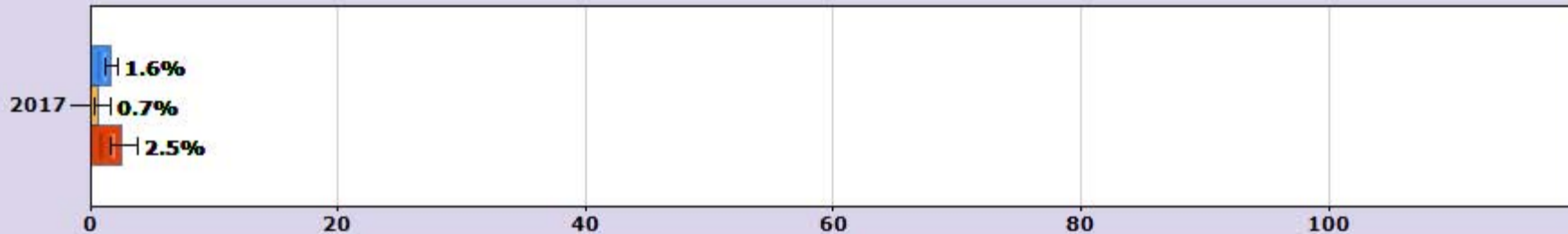


Carried a weapon on school property

(such as a gun, knife, or club, on at least 1 day during the 30 days before the survey)

Philadelphia, PA, High School Youth Risk Behavior Survey, 2017

■ Total ■ Female ■ Male



Were threatened or injured with a weapon on school property
(such as a gun, knife, or club, one or more times during the 12 months before the survey)
Philadelphia, PA, High School Youth Risk Behavior Survey, 2017

